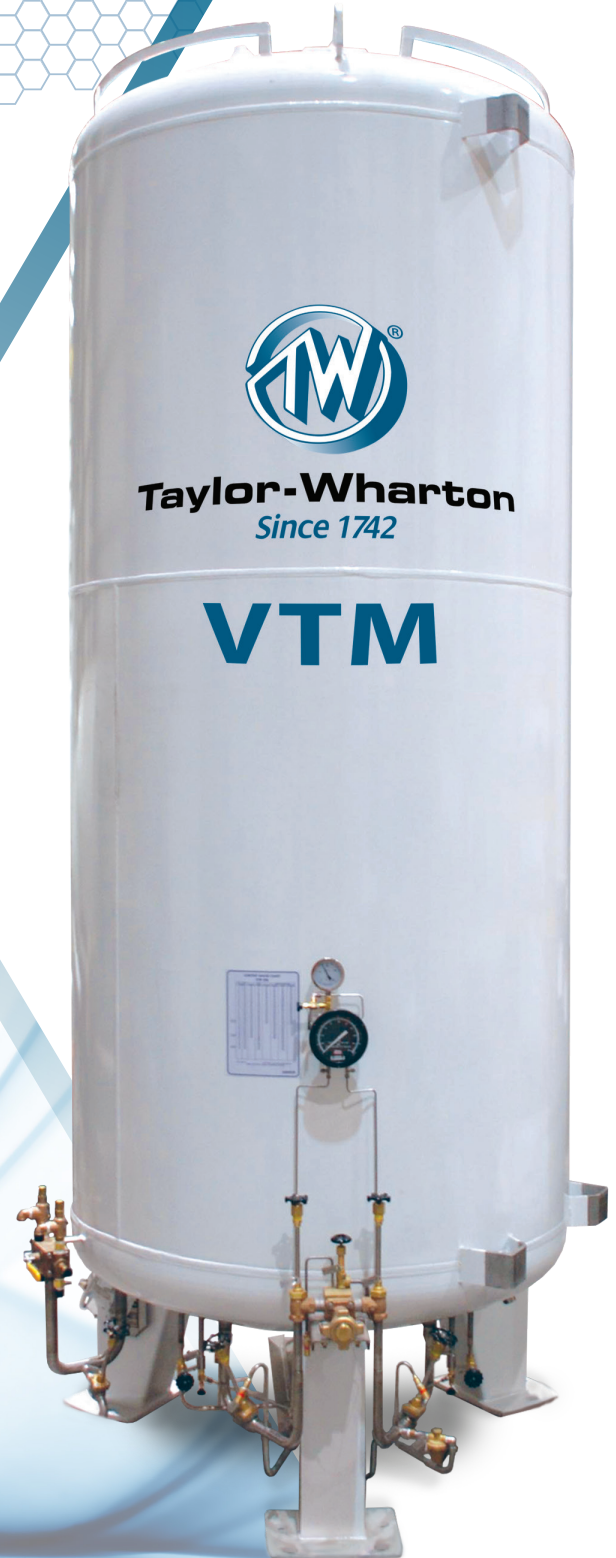


Taylor-Wharton VTM Tanks

VTM Atmospheric Service Bulk Tanks

- Built to Taylor-Wharton Quality & Reliability Standards
- Vertical Bulk Storage for Liquid Oxygen, Argon & Nitrogen
- Five Year Vacuum Warranty
- Structural Design Suitable for 200% of Gravity Seismic Sites
- Designed to Most Current Stringent International Building Code Seismic Standards
- Easy to Maintain with Readily Accessible Valves and Controls
- Standard Dual Safety Devices
- Mounting Holes are Positioned for Easy Installation of Anchor Bolts
- 2.0" Top Fill and 2.0" Vacuum Jacketed Auxillary Liquid Line (6000G & Larger)
- Durable Industrial Coating with Epoxy Primer and Polyurethane Enamel Topcoat
- Custom Piped to Customers Specification Upon Request
- All Models CRN Approved

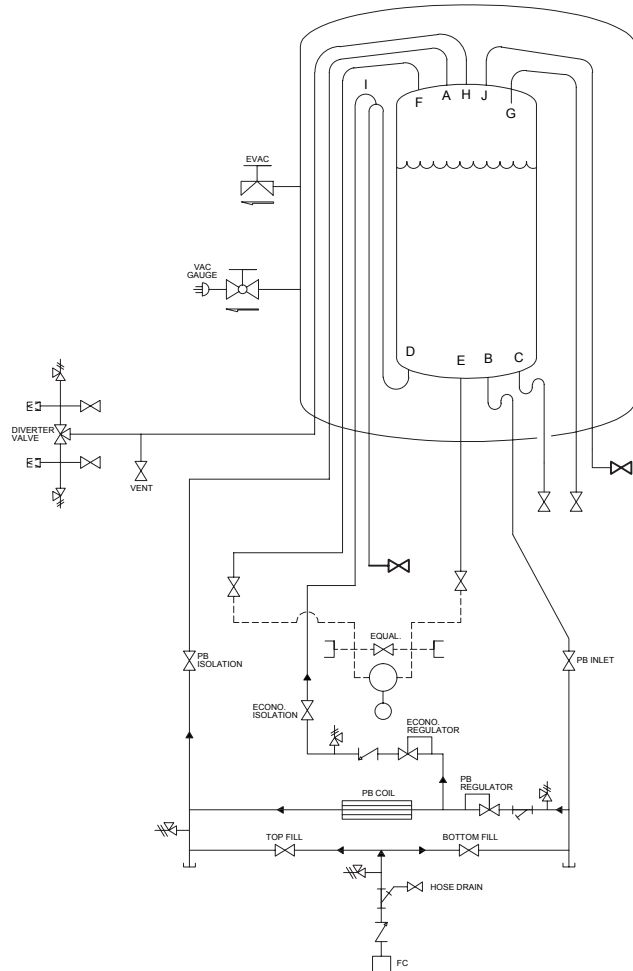


VTM Tank Specifications

MODEL	MAWP		WATER CAPACITY				DIAMETER		HEIGHT		EMPTY WEIGHT		NER
			GROSS CAPACITY		NET CAPACITY (95%)								
	psi	bar	gallons	liters	gallons	liters	feet - inches	mm	feet - inches	mm	lbs	kg	%/DAY O ₂
VTM-1500-250	250	17.24	1,585	6,000	1,506	5,700	6'-2.8"	1,900	17'-7"	5,360	9,259	4,200	0.32
VTM-3000-250	250	17.24	2,747	10,400	2,610	9,880	7'-2.6"	2,200	20'-8"	6,300	16,980	7,700	0.27
VTM-6000-250	250	17.24	5,865	22,200	5,571	21,090	7'-2.6"	2,200	37'-5"	11,400	25,133	11,400	0.21
VTM-9000-250	250	17.24	9,378	35,500	8,909	33,725	9'-10"	3,000	29'-7"	9,000	44,540	20,200	0.15
VTM-11000-250	250	17.24	11,360	43,000	10,792	40,850	9'-10"	3,000	34'-5"	10,500	51,940	23,560	0.13
VTM-13000-250	250	17.24	12,839	48,600	12,197	46,170	9'-10"	3,000	38'-1"	11,600	54,460	24,700	0.12
VTM-15000-250	250	17.24	14,846	56,200	14,104	53,390	10'-6"	3,200	37'-9"	11,500	60,520	27,450	0.10

- Available in Any Maximum Pressure:
 - Also Standard in 500 psi
- Horizontal Models Available
- All Specifications are nominal

VESSEL NOZZLES - Pipe Size (in.)		
Description	1500-3000	6000-15000 gal
Top Fill (A)	1-1/2"	2"
Bottom Fill (B)	1-1/2"	1-1/2"
Liquid Auxillary (C)	1-1/2"	2"
Siphon Withdrawal (D)	1-1/2"	1-1/2"
Liquid Instrument (E)	3/8"	3/8"
Gas Instrument (F)	3/8"	3/8"
Full Trycock (G)	1/2"	1/2"
Safety (H)	1-1/2"	1-1/2"
Economizer Return (I)	1/2"	1/2"
Pump Return (J)	1"	1"



Contact us Today for More information about our Comprehensive Solution!